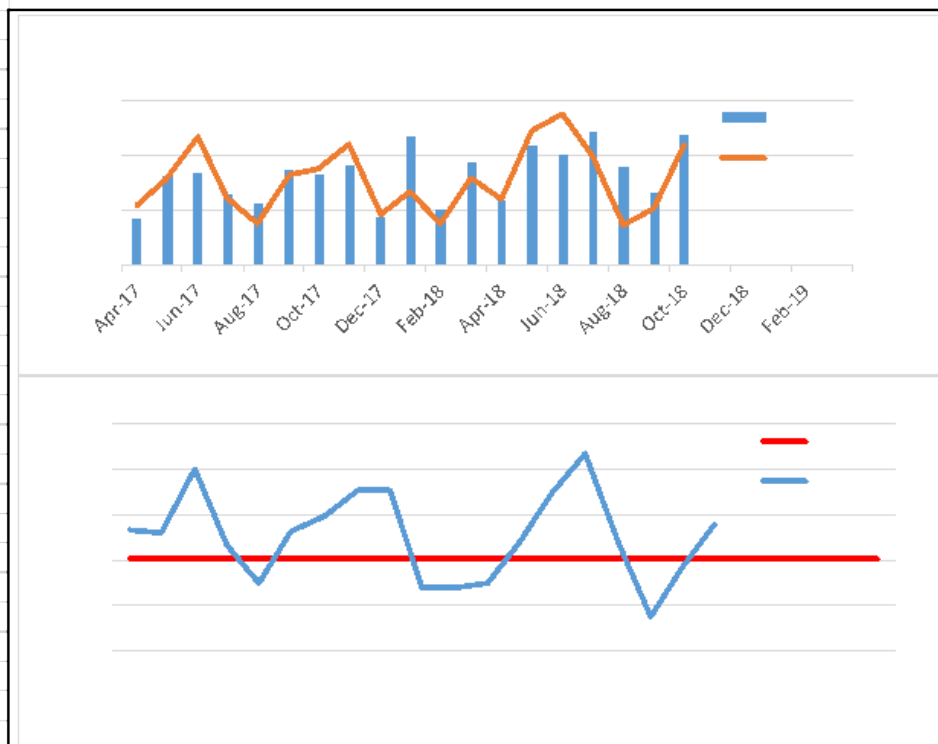


Chart 1

Number of contacts and % going on to referral **Oct-18**



| Month | Contacts | Refs | % Mnth | % YTD | Target | Var. | RAG |
|--------|----------|------|--------|-------|--------|------|-----|
| Apr-17 | 672 | 190 | 28.3% | 28.3% | 25.0% | 3.3% | A |
| May-17 | 823 | 229 | 27.8% | 28.0% | 25.0% | 3.0% | A |
| Jun-17 | 842 | 295 | 35.0% | 30.6% | 25.0% | 5.6% | A |
| Jul-17 | 755 | 201 | 26.6% | 29.6% | 25.0% | 4.6% | A |
| Aug-17 | 729 | 163 | 22.4% | 28.2% | 25.0% | 3.2% | A |
| Sep-17 | 850 | 238 | 28.0% | 28.2% | 25.0% | 3.2% | A |
| Oct-17 | 832 | 247 | 29.7% | 28.4% | 25.0% | 3.4% | A |
| Nov-17 | 866 | 282 | 32.6% | 29.0% | 25.0% | 4.0% | A |
| Dec-17 | 675 | 176 | 32.6% | 31.7% | 25.0% | 6.7% | A |
| Jan-18 | 970 | 211 | 21.7% | 30.4% | 25.0% | 5.4% | A |
| Feb-18 | 705 | 161 | 21.7% | 29.5% | 25.0% | 4.5% | A |
| Mar-18 | 876 | 230 | 22.4% | 28.8% | 25.0% | 3.8% | A |
| Apr-18 | 737 | 198 | 26.9% | 26.9% | 25.0% | 1.9% | A |
| May-18 | 941 | 305 | 32.4% | 30.0% | 25.0% | 5.0% | R |
| Jun-18 | 902 | 331 | 36.7% | 32.3% | 25.0% | 7.3% | R |
| Jul-18 | 992 | 266 | 26.8% | 30.8% | 25.0% | 5.8% | R |
| Aug-18 | 860 | 160 | 18.6% | 28.4% | 25.0% | 3.4% | A |
| Sep-18 | 762 | 185 | 24.3% | 27.8% | 25.0% | 2.8% | A |
| Oct-18 | 976 | 283 | 29.0% | 28.0% | 25.0% | 3.0% | A |
| Nov-18 | | | | | 25.0% | | |
| Dec-18 | | | | | 25.0% | | |
| Jan-19 | | | | | 25.0% | | |
| Feb-19 | | | | | 25.0% | | |
| Mar-19 | | | | | 25.0% | | |

CSC Commentary
 Conversion from the contact to a referral has increased this month with the conversion being 29%, however the overall Year to Date (YTD) figure has increased again to 28%. Although higher than the target set (25%) this is positive as it also often brings better referral to assessment performance, although there is still some way to go in both areas. The application of threshold in the Integrated Front Door (IFD) remains an area that is closely monitored by the IFD and Assessment Team Managers and the new introduction of TYSS next month should see this figure improve.

| | | | | | | | |
|-------------|--------------|--------------|----------|--------------|--------------|--------------|----------|
| YTD: | 6,170 | 1,728 | - | 28.0% | 30.0% | -2.0% | A |
|-------------|--------------|--------------|----------|--------------|--------------|--------------|----------|

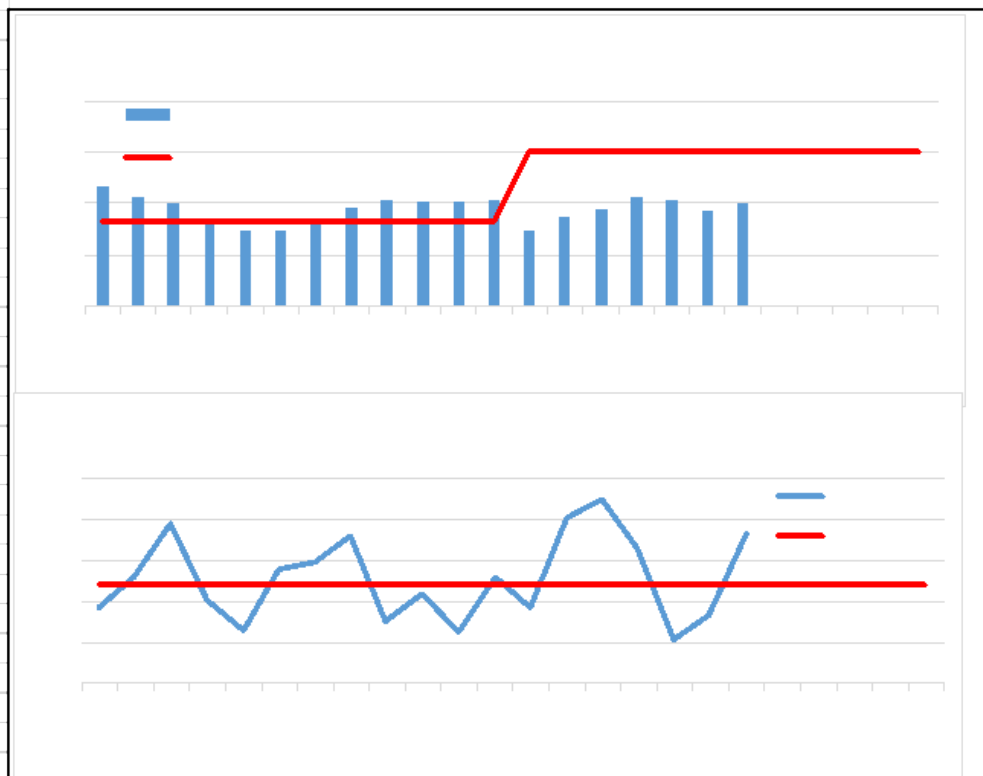
Definition
 The table shows the number of referrals and contacts happening in each given month. The YTD% column shows the year to date number of contacts going on to referrals. The measure is to be taken on a YTD % starting from the current financial year.

| | | |
|------------------|------------------|------------------|
| G=<25% | A=26%-29% | R=30>% |
|------------------|------------------|------------------|

Chart 2

Number of Referrals per 10,000 - Rolling 12 Months

Oct-18



| Month | Refs | 12 Mths | Ref Rate | Mth T Rate | Target | Variance | RAG |
|--------|------|---------|----------|------------|--------|----------|-----|
| Apr-17 | 190 | 2702 | 566.3 | 220 | 532 | 6.4% | A |
| May-17 | 229 | 2655 | 556.4 | 220 | 532 | 4.6% | A |
| Jun-17 | 295 | 2621 | 549.3 | 220 | 532 | 3.3% | A |
| Jul-17 | 201 | 2553 | 535.1 | 220 | 532 | 0.6% | A |
| Aug-17 | 163 | 2496 | 523.1 | 220 | 532 | -1.7% | G |
| Sep-17 | 238 | 2499 | 523.7 | 220 | 532 | -1.6% | G |
| Oct-17 | 247 | 2550 | 534.4 | 220 | 532 | 0.5% | A |
| Nov-17 | 279 | 2601 | 545.1 | 220 | 532 | 2.5% | A |
| Dec-17 | 176 | 2644 | 554.1 | 220 | 532 | 4.2% | R |
| Jan-18 | 208 | 2630 | 551.2 | 220 | 532 | 3.6% | R |
| Feb-18 | 161 | 2630 | 551.2 | 220 | 532 | 3.6% | A |
| Mar-18 | 229 | 2636 | 552.4 | 220 | 532 | 3.8% | R |
| Apr-18 | 193 | 2619 | 523.7 | 220 | 600 | -12.7% | G |
| May-18 | 301 | 2691 | 538.1 | 220 | 600 | -10.3% | G |
| Jun-18 | 323 | 2719 | 543.7 | 220 | 600 | -9.4% | G |
| Jul-18 | 265 | 2783 | 556.5 | 220 | 600 | -7.3% | G |
| Aug-18 | 153 | 2773 | 554.5 | 220 | 600 | -7.6% | G |
| Sep-18 | 183 | 2718 | 543.5 | 220 | 600 | -9.4% | G |
| Oct-18 | 282 | 2753 | 550.5 | 220 | 600 | -8.2% | G |
| Nov-18 | | | | 220 | 600 | | |
| Dec-18 | | | | 220 | 600 | | |
| Jan-19 | | | | 220 | 600 | | |
| Feb-19 | | | | 220 | 600 | | |
| Mar-19 | | | | 220 | 600 | | |

CSC Commentary

Referrals have increased again this month. This target does have some volatility. We are continuing to do well against our Statistical Neighbour and England average.

Definition

Number of referrals (rolling 12 months) divided by the population of 0-17 year olds in Peterborough multiplied by 10,000

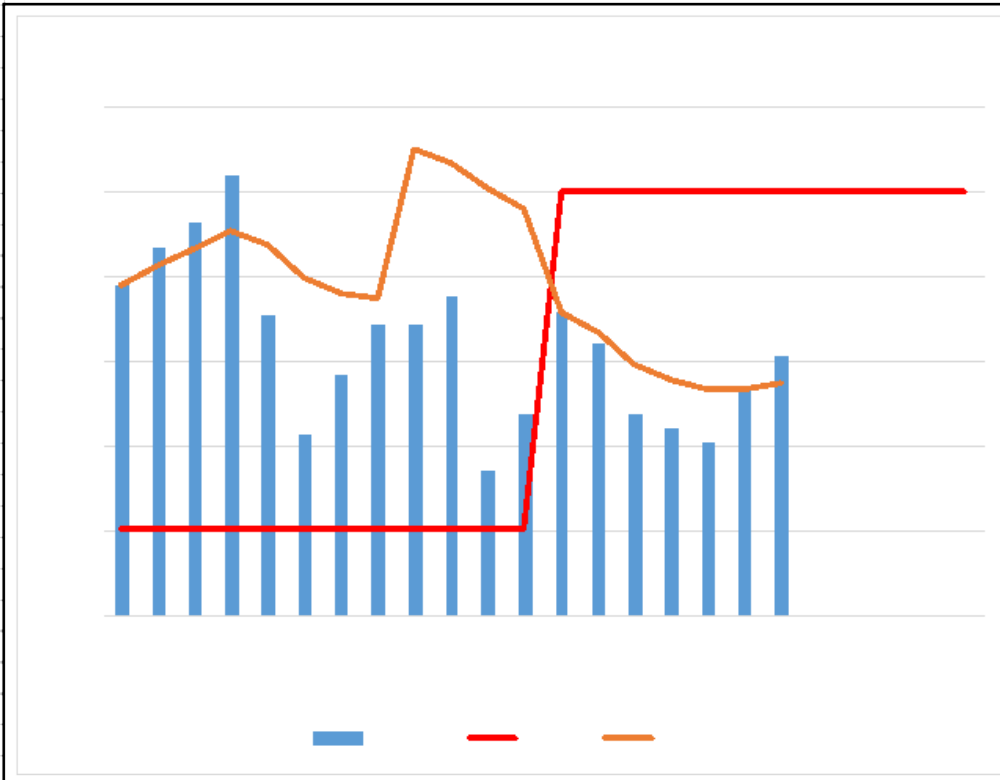
Population for denominator: 50009

G=<600 **A=600-650** **R=651>**

| Year | PCC Result | SN Result | ER Result | ENG Result |
|---------|------------|-----------|-----------|------------|
| 2014-15 | 587 | 768 | 410 | 548 |
| 2015-16 | 987 | 662 | 426 | 532 |
| 2016-17 | 563 | 681 | 374 | 548 |

Chart 3

Referrals progressing to Single Assessment **Oct-18**



CSC Commentary

A slight improvement on last month and with the review and start up of the Integrated Front Door now in place the conversion rate in the Assessment teams and this target will be effected by the implementation of those changes and this figure should show improvement in December.

| Month | Assess | Refs | % assess | % YTD | Target | Var | RAG |
|-------------|--------------|--------------|----------|--------------|--------------|------------|----------|
| Apr-17 | 170 | 190 | 89.5% | 89.5% | 75.1% | 14% | A |
| May-17 | 210 | 229 | 91.7% | 90.7% | 75.1% | 17% | A |
| Jun-17 | 275 | 295 | 93.2% | 91.7% | 75.1% | 18% | A |
| Jul-17 | 193 | 201 | 96.0% | 92.7% | 75.1% | 21% | A |
| Aug-17 | 143 | 163 | 87.7% | 91.9% | 75.1% | 13% | A |
| Sep-17 | 192 | 238 | 80.7% | 89.9% | 75.1% | 6% | A |
| Oct-17 | 208 | 247 | 84.2% | 89.0% | 75.1% | 9% | A |
| Nov-17 | 227 | 259 | 87.2% | 88.7% | 75.1% | 12% | A |
| Dec-17 | 195 | 210 | 87.2% | 97.6% | 75.1% | 12% | A |
| Jan-18 | 171 | 181 | 88.9% | 96.7% | 75.1% | 14% | A |
| Feb-18 | 167 | 189 | 78.6% | 95.2% | 75.1% | 3% | A |
| Mar-18 | 199 | 214 | 81.9% | 94.0% | 75.1% | 7% | A |
| Apr-18 | 167 | 190 | 87.9% | 87.9% | 95.0% | -7% | R |
| May-18 | 271 | 315 | 86.0% | 86.7% | 95.0% | -9% | R |
| Jun-18 | 271 | 331 | 81.9% | 84.8% | 95.0% | -13% | R |
| Jul-18 | 222 | 274 | 81.0% | 83.9% | 95.0% | -14% | R |
| Aug-18 | 129 | 161 | 80.1% | 83.4% | 95.0% | -15% | R |
| Sep-18 | 137 | 164 | 83.5% | 83.4% | 95.0% | -11% | R |
| Oct-18 | 239 | 280 | 85.4% | 83.7% | 95.0% | -10% | R |
| Nov-18 | | | | | 95.0% | | |
| Dec-18 | | | | | 95.0% | | |
| Jan-19 | | | | | 95.0% | | |
| Feb-19 | | | | | 95.0% | | |
| Mar-19 | | | | | 95.0% | | |
| YTD: | 1,436 | 1,715 | - | 83.7% | 75.1% | 8.6 | R |

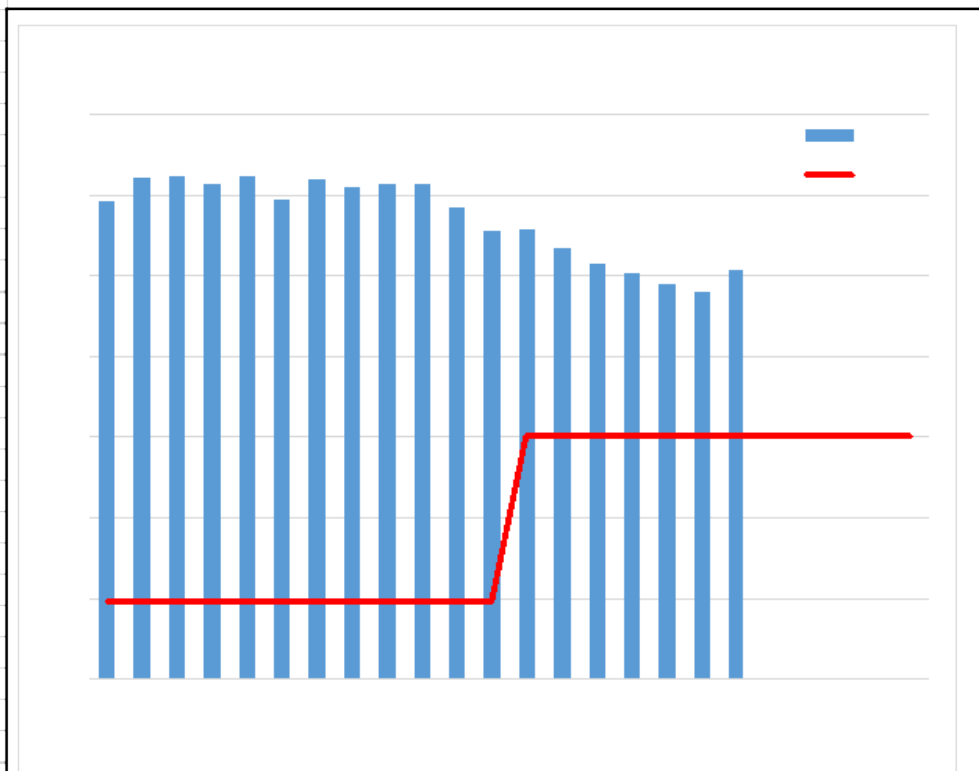
G=>95 **A=90-94** **R=<89**

| Year | PCC Result | SN Result | ENG Result |
|---------|------------|-----------|------------|
| 2014-15 | 109% | 80% | 87% |
| 2015-16 | 68% | 87% | 92% |
| 2016-17 | 87% | 99% | 94% |

Chart 4

Early Help Assessments per 10,000 - Rolling 12 Months

Oct-18



| Month | EHAs | 12 Mths | Rate | Target | Var. | RAG |
|--------|------|---------|-------|--------|--------|-----|
| Apr-17 | 121 | 1887 | 395.5 | 147.9 | 167.4% | |
| May-17 | 219 | 1955 | 409.7 | 147.9 | 177.0% | |
| Jun-17 | 206 | 1963 | 411.4 | 147.9 | 178.2% | |
| Jul-17 | 145 | 1937 | 406.0 | 147.9 | 174.5% | |
| Aug-17 | 78 | 1961 | 411.0 | 147.9 | 177.9% | |
| Sep-17 | 90 | 1897 | 397.6 | 147.9 | 168.8% | |
| Oct-17 | 179 | 1954 | 409.5 | 147.9 | 176.9% | |
| Nov-17 | 184 | 1929 | 404.3 | 147.9 | 173.3% | |
| Dec-17 | 161 | 1941 | 406.8 | 147.9 | 175.0% | |
| Jan-18 | 163 | 1938 | 406.2 | 147.9 | 174.6% | |
| Feb-18 | 93 | 1870 | 391.9 | 147.9 | 165.0% | |
| Mar-18 | 171 | 1801 | 377.4 | 147.9 | 155.2% | |
| Apr-18 | 116 | 1805 | 378.3 | 250 | 51.3% | G |
| May-18 | 162 | 1748 | 366.3 | 250 | 46.5% | G |
| Jun-18 | 162 | 1704 | 357.1 | 250 | 42.8% | G |
| Jul-18 | 114 | 1673 | 350.6 | 250 | 40.2% | G |
| Aug-18 | 47 | 1642 | 344.1 | 250 | 37.7% | G |
| Sep-18 | 68 | 1620 | 339.5 | 250 | 35.8% | G |
| Oct-18 | 244 | 1685 | 353.1 | 250 | 41.3% | |
| Nov-18 | | | | 250 | | |
| Dec-18 | | | | 250 | | |
| Jan-19 | | | | 250 | | |
| Feb-19 | | | | 250 | | |
| Mar-19 | | | | 250 | | |

CSC Commentary

The number of Early Help Assessments initiated in October 2018 is significantly higher than September 2018. It is considered that this step increase is due in the main to the version 14 upgrade to Liquid Logic which required the manual closing of assessments started but not passed through the Gateway and then re-opening of these following the upgrade. The number of new EHA's opened will continue to be monitored closely over the next few months.

Definition

The rate is the number of new EHAs recorded in the previous 12 months divided by the population of 0-17 year olds in Peterborough multiplied by 10,000. The number of EHAs is taken from the local EHA tracker database and is not externally valid.

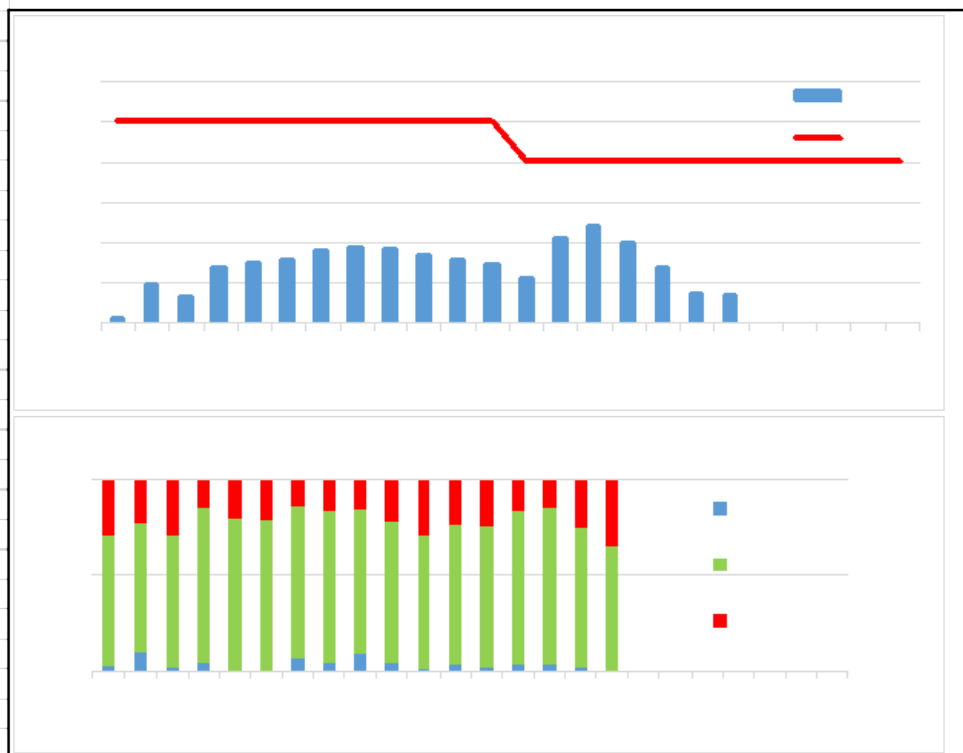
Population for denominator: 47715

| | | |
|---------|------------|--------|
| G =250> | A =147-249 | R=<146 |
|---------|------------|--------|

| Year | PCC Result | ER Result | ENG Result |
|---------|------------|-----------|------------|
| 2012/13 | - | - | - |
| 2013/14 | - | - | - |
| 2014/15 | 234.6 | 131.9 | - |

Chart 5

Single Assessment Timescales (within 45 working days) **Oct-18**



| Month | SA 45 | SA >45 | SA 1 day | SA All | % Mrth | % YTD | Target | RAG |
|--------|-------|--------|----------|--------|--------|-------|--------|-----|
| Apr-17 | 118 | 49 | 5 | 167 | 70.7% | 70.7% | 95.0% | A |
| May-17 | 197 | 57 | 23 | 254 | 77.6% | 74.8% | 95.0% | R |
| Jun-17 | 180 | 75 | 5 | 255 | 70.6% | 73.2% | 95.0% | R |
| Jul-17 | 269 | 47 | 14 | 316 | 85.1% | 77.0% | 95.0% | A |
| Aug-17 | 246 | 64 | 1 | 310 | 79.4% | 77.6% | 95.0% | R |
| Sep-17 | 193 | 51 | 0 | 244 | 79.1% | 77.8% | 95.0% | R |
| Oct-17 | 198 | 31 | 15 | 229 | 86.5% | 78.9% | 95.0% | A |
| Nov-17 | 158 | 30 | 8 | 188 | 84.0% | 79.4% | 95.0% | A |
| Dec-17 | 157 | 28 | 16 | 185 | 76.2% | 79.1% | 95.0% | R |
| Jan-18 | 248 | 71 | 13 | 319 | 73.7% | 78.4% | 95.0% | R |
| Feb-18 | 151 | 60 | 3 | 211 | 70.1% | 77.8% | 95.0% | R |
| Mar-18 | 181 | 56 | 8 | 237 | 73.0% | 77.4% | 95.0% | R |
| Apr-18 | 185 | 60 | 4 | 245 | 75.5% | 75.5% | 90.0% | R |
| May-18 | 279 | 53 | 11 | 332 | 84.0% | 80.4% | 90.0% | A |
| Jun-18 | 237 | 40 | 10 | 277 | 85.6% | 82.1% | 90.0% | A |
| Jul-18 | 257 | 87 | 7 | 344 | 74.7% | 80.0% | 90.0% | R |
| Aug-18 | 211 | 111 | 1 | 322 | 65.5% | 76.9% | 90.0% | R |
| Sep-18 | 148 | 121 | 8 | 269 | 55.0% | 73.6% | 90.0% | R |
| Oct-18 | 195 | 77 | 8 | 272 | 71.7% | 73.4% | 90.0% | R |
| Nov-18 | | | | | | | 90.0% | |
| Dec-18 | | | | | | | 90.0% | |
| Jan-19 | | | | | | | 90.0% | |
| Feb-19 | | | | | | | 90.0% | |
| Mar-19 | | | | | | | 90.0% | |

CSC Commentary
 A drop in performance has occurred again this month. This target remains a challenge, however each manager across all service areas continues to work with staff using a 20 day management review of the assessment to improve timeliness.

| | | | | | | | | |
|-------------|------|-----|----|------|----|-------|-------|---|
| YTD: | 1512 | 549 | 49 | 2061 | -- | 73.4% | 95.0% | R |
|-------------|------|-----|----|------|----|-------|-------|---|

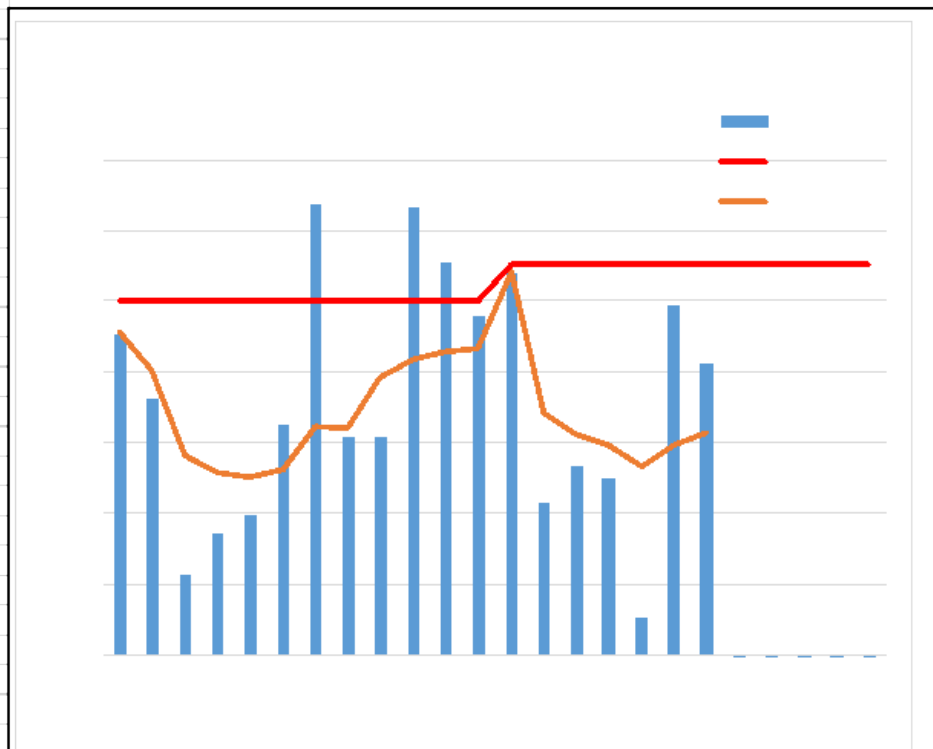
Definition
 The number of single assessments YTD completed within 45 working days from the start of the referral start, as a percentage of the number of single assessments completed YTD.

| | | |
|-----------------|----------------|-----------------|
| G=>90 | A=79-89 | R=<78 |
|-----------------|----------------|-----------------|

| Year | PCC Result | SN Result | ER Result | ENG Result |
|---------|------------|-----------|-----------|------------|
| 2014-15 | 90% | 83% | | 81% |
| 2015-16 | 91% | 85% | | 83% |
| 2016-17 | 82% | 84% | | 83% |

Chart 6

Re-referrals within 12 months **Oct-18**



| Month | Re-Refs | Refs | % Mnth | % YTD | Target | Var | RAG |
|--------|---------|------|--------|-------|--------|------|-----|
| Apr-17 | 40 | 190 | 21.1% | 21.1% | 22.0% | 4.3 | |
| May-17 | 44 | 229 | 19.2% | 20.0% | 22.0% | -2.0 | |
| Jun-17 | 42 | 295 | 14.2% | 17.6% | 22.0% | -4.4 | |
| Jul-17 | 31 | 201 | 15.4% | 17.2% | 22.0% | -4.8 | |
| Aug-17 | 26 | 163 | 16.0% | 17.0% | 22.0% | -5.0 | |
| Sep-17 | 44 | 238 | 18.5% | 17.2% | 22.0% | -4.8 | |
| Oct-17 | 61 | 247 | 24.7% | 18.4% | 22.0% | -3.6 | |
| Nov-17 | 52 | 279 | 18.1% | 18.4% | 22.0% | -3.6 | |
| Dec-17 | 27 | 176 | 18.1% | 19.8% | 22.0% | -2.2 | |
| Jan-18 | 51 | 208 | 24.6% | 20.3% | 22.0% | -1.7 | |
| Feb-18 | 42 | 161 | 23.1% | 20.6% | 22.0% | -1.4 | |
| Mar-18 | 49 | 229 | 21.6% | 20.7% | 22.0% | -1.3 | |
| Apr-18 | 44 | 193 | 22.8% | 22.8% | 23.0% | -0.2 | G |
| May-18 | 49 | 301 | 16.3% | 18.8% | 23.0% | -4.2 | G |
| Jun-18 | 56 | 323 | 17.3% | 18.2% | 23.0% | -4.8 | G |
| Jul-18 | 45 | 265 | 17.0% | 17.9% | 23.0% | -5.1 | G |
| Aug-18 | 20 | 153 | 13.1% | 17.3% | 23.0% | -5.7 | G |
| Sep-18 | 40 | 183 | 21.9% | 17.9% | 23.0% | -5.1 | G |
| Oct-18 | 57 | 282 | 20.2% | 18.3% | 23.0% | -4.7 | G |
| Nov-18 | | | | | 23.0% | | |
| Dec-18 | | | | | 23.0% | | |
| Jan-19 | | | | | 23.0% | | |
| Feb-19 | | | | | 23.0% | | |
| Mar-19 | | | | | 23.0% | | |

CSC Commentary
 This has remained at green all year, reflecting that we are closing the right cases and that they are not being referred back to Childrens Services. A positive position for Peterborough and partners.

| | | | | | | | |
|------|-----|-------|----|-------|-------|------|---|
| YTD: | 311 | 1,700 | -- | 18.3% | 22.0% | -3.7 | G |
|------|-----|-------|----|-------|-------|------|---|

Definition
 The percentage of referrals where a previous referral has occurred within the last 12 months. If a child has more than one re-referral in the year, each one will be counted.

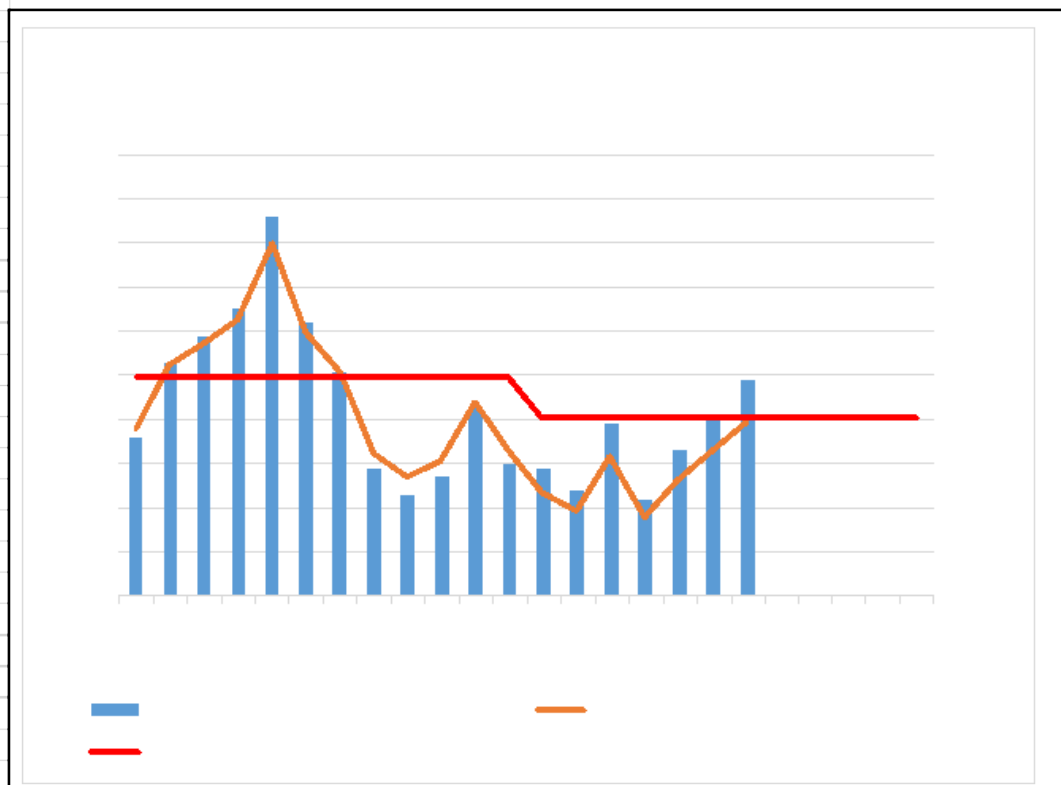
| | | |
|--------|----------|-------|
| G=<23% | A=24-29% | R=30> |
|--------|----------|-------|

| Year | PCC Result | SN Result | ENG Result |
|---------|------------|-----------|------------|
| 2014-15 | 18% | 26% | 24% |
| 2015-16 | 29% | 21% | 22% |
| 2016-17 | 27% | 22% | 21% |

Chart 7

Number of Children with a Child Protection Plan per 10,000

Oct-18



| Month | CP | Pop. | Rate | Target | Variance | RAG |
|--------|-----|-------|------|--------|----------|-----|
| Apr-17 | 236 | 47715 | 49.5 | 52.4 | -5.6% | G |
| May-17 | 253 | 47715 | 53.0 | 52.4 | 1.2% | A |
| Jun-17 | 259 | 47715 | 54.3 | 52.4 | 3.6% | A |
| Jul-17 | 265 | 47715 | 55.5 | 52.4 | 6.0% | R |
| Aug-17 | 286 | 47715 | 59.9 | 52.4 | 14.4% | R |
| Sep-17 | 262 | 47715 | 54.9 | 52.4 | 4.8% | R |
| Oct-17 | 251 | 47715 | 52.6 | 52.4 | 0.4% | A |
| Nov-17 | 229 | 47715 | 48.0 | 52.4 | -8.4% | G |
| Dec-17 | 223 | 47715 | 46.7 | 52.4 | -10.8% | G |
| Jan-18 | 227 | 47715 | 47.6 | 52.4 | -9.2% | G |
| Feb-18 | 243 | 47715 | 50.9 | 52.4 | -2.8% | G |
| Mar-18 | 230 | 47715 | 48.2 | 52.4 | -8.0% | G |
| Apr-18 | 229 | 50009 | 45.8 | 50.0 | -8.4% | G |
| May-18 | 224 | 50009 | 44.8 | 50.0 | -10.4% | G |
| Jun-18 | 239 | 50009 | 47.8 | 50.0 | -4.4% | G |
| Jul-18 | 222 | 50009 | 44.4 | 50.0 | -11.2% | G |
| Aug-18 | 233 | 50009 | 46.6 | 50.0 | -6.8% | G |
| Sep-18 | 241 | 50009 | 48.2 | 50.0 | -3.6% | G |
| Oct-18 | 249 | 50009 | 49.8 | 50.0 | -0.4% | G |
| Nov-18 | | 50009 | | 50.0 | | |
| Dec-18 | | 50009 | | 50.0 | | |
| Jan-19 | | 50009 | | 50.0 | | |
| Feb-19 | | 50009 | | 50.0 | | |
| Mar-19 | | 50009 | | 50.0 | | |

CSC Commentary

There will always be some volatility in the number of children being made subject to a CP Plan, with some large siblings groups affecting numbers. Our aim to reduce Child Protection numbers to Child In Need where safe and appropriate continues and are likely to see further reductions in the following months under Family Safeguarding. We remain within the area of good performance against Other Local Authorities.

Definition

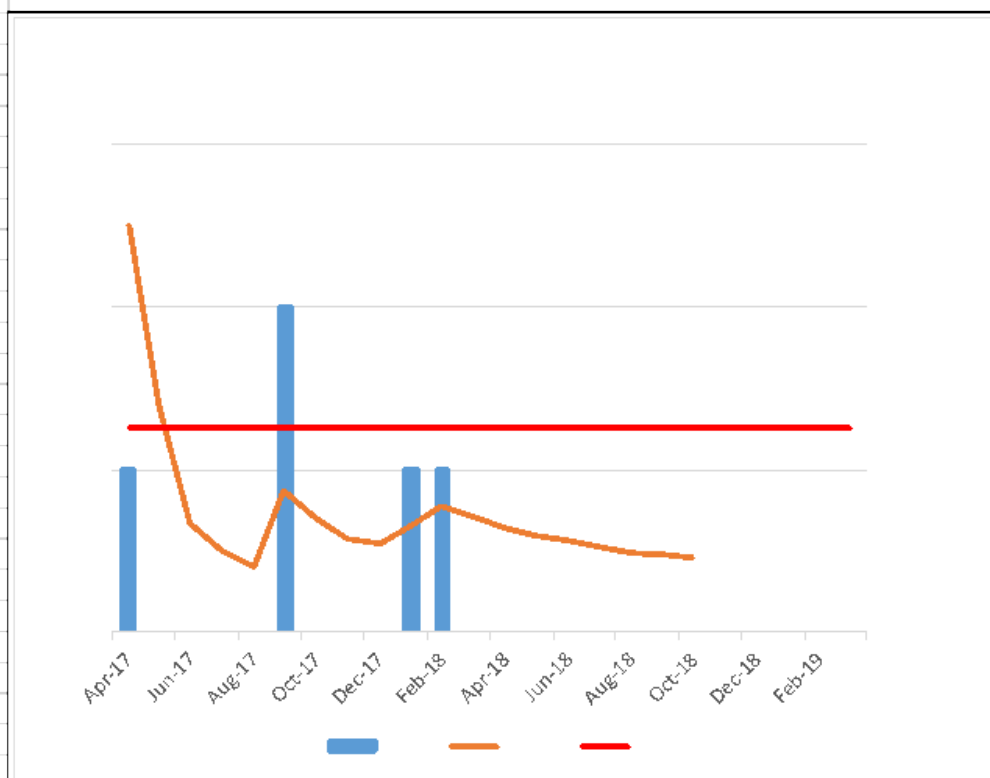
Number of children with a current child protection plan divided by the population of 0-17 year olds in Peterborough multiplied by 10,000. The number of children is taken as a snapshot count at the end of each month.
Population for denominator: 50009

| | | |
|-----------------|----------------|-----------------|
| G <50 | A 51-52 | R >53 |
|-----------------|----------------|-----------------|

| Year | PCC Result | SN Result | ENG Result |
|---------|------------|-----------|------------|
| 2014-15 | 50 | 56 | 43 |
| 2015-16 | 54 | 57 | 43 |
| 2016-17 | 51 | 55 | 43 |

Chart 8

Child Protection Plans lasting 2 years or more **Oct-18**



CSC Commentary

This target has remained consistent and on target over the year, with any child on a CP Plan over 12 months being formally reviewed by the group manager for a Public Law Outline (Pre-Care Proceedings process). This has remained a positive position for several months, which continues and with very few children on plans over 18 months in relation to the number of children subject to a CP Plan.

| Month | 2 Yr+ | All End | % Mnth | % YTD | Target | Var | RAG |
|--------|-------|---------|--------|-------|--------|------|-----|
| Apr-17 | 1 | 20 | 5.0% | 5.0% | 2.5% | -1.5 | R |
| May-17 | 0 | 16 | 0.0% | 2.8% | 2.5% | -1.6 | G |
| Jun-17 | 0 | 39 | 0.0% | 1.3% | 2.5% | -2.5 | G |
| Jul-17 | 0 | 27 | 0.0% | 1.0% | 2.5% | -2.5 | G |
| Aug-17 | 0 | 26 | 0.0% | 0.8% | 2.5% | -2.5 | G |
| Sep-17 | 2 | 46 | 4.3% | 1.7% | 2.5% | -0.9 | G |
| Oct-17 | 0 | 41 | 0.0% | 1.4% | 2.5% | -1.1 | G |
| Nov-17 | 0 | 49 | 0.0% | 1.1% | 2.5% | -1.4 | G |
| Dec-17 | 0 | 13 | 0.0% | 1.1% | 2.5% | -1.5 | G |
| Jan-18 | 1 | 30 | 3.3% | 1.3% | 2.5% | -1.2 | G |
| Feb-18 | 1 | 18 | 5.6% | 1.5% | 2.5% | -0.8 | R |
| Mar-18 | 0 | 47 | 0.0% | 1.4% | 2.5% | -1.0 | G |
| Apr-18 | 0 | 18 | 0.0% | 1.3% | 2.5% | -1.2 | G |
| May-18 | 0 | 37 | 0.0% | 1.2% | 2.5% | -1.3 | G |
| Jun-18 | 0 | 22 | 0.0% | 1.1% | 2.5% | -1.4 | G |
| Jul-18 | 0 | 28 | 0.0% | 1.0% | 2.5% | -1.5 | G |
| Aug-18 | 0 | 40 | 0.0% | 1.0% | 2.5% | -1.5 | G |
| Sep-18 | 0 | 19 | 0.0% | 0.9% | 2.5% | -1.6 | G |
| Oct-18 | 0 | 17 | 0.0% | 0.9% | 2.5% | -1.6 | G |
| Nov-18 | | | | | 2.5% | | |
| Dec-18 | | | | | 2.5% | | |
| Jan-19 | | | | | 2.5% | | |
| Feb-19 | | | | | 2.5% | | |
| Mar-19 | | | | | 2.5% | | |

| | | | | | | | |
|-------------|----------|------------|-----------|-------------|-------------|-------------|----------|
| YTD: | 0 | 181 | -- | 0.0% | 2.5% | -2.5 | G |
|-------------|----------|------------|-----------|-------------|-------------|-------------|----------|

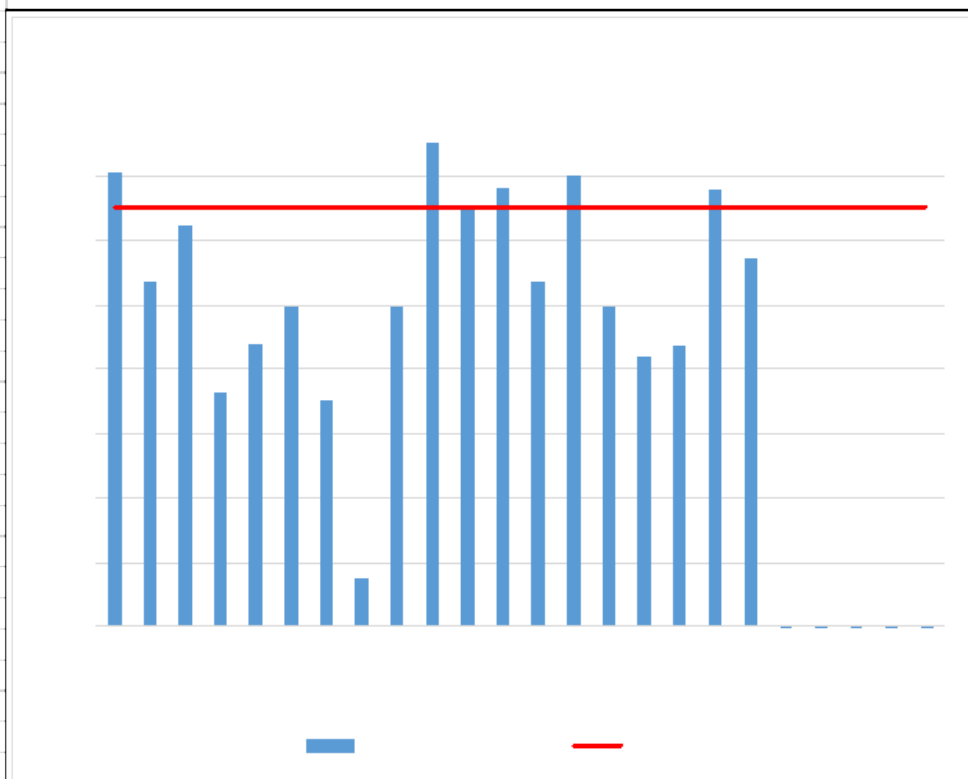
Definition
The percentage of children ceasing to be the subject of a Child Protection Plan during the year ending 31 March, who had been the subject of a Child Protection Plan continuously for two years or longer.

| | | |
|-------------------|-----------------|-----------------|
| G=<2.5% | A=2.5-4% | R=4>% |
|-------------------|-----------------|-----------------|

| Year | PCC Result | SN Result | ENG Result |
|---------|------------|-----------|------------|
| 2014-15 | 2% | 4% | 4% |
| 2015-16 | 2% | 5% | 4% |
| 2016-17 | 0% | 4% | 3% |

Chart 9

Child protection statutory visits in time **Oct-18**



| Month | Num. | Denom. | % of CP | Target | Variance | RAG |
|--------|------|--------|---------|--------|----------|-----|
| Apr-17 | 220 | 222 | 99.1% | 98.0% | 1.1 | G |
| May-17 | 222 | 232 | 95.7% | 98.0% | -2.3 | A |
| Jun-17 | 228 | 234 | 97.4% | 98.0% | -0.6 | A |
| Jul-17 | 215 | 233 | 92.3% | 98.0% | -5.7 | A |
| Aug-17 | 240 | 256 | 93.8% | 98.0% | -4.3 | A |
| Sep-17 | 244 | 257 | 94.9% | 98.0% | -3.1 | A |
| Oct-17 | 231 | 251 | 92.0% | 98.0% | -6.0 | A |
| Nov-17 | 198 | 229 | 86.5% | 98.0% | -97.1 | R |
| Dec-17 | 207 | 218 | 95.0% | 98.0% | -97.1 | A |
| Jan-18 | 215 | 215 | 100.0% | 98.0% | -97.0 | G |
| Feb-18 | 200 | 204 | 98.0% | 98.0% | -97.0 | G |
| Mar-18 | 215 | 218 | 98.6% | 98.0% | -97.0 | G |
| Apr-18 | 201 | 210 | 95.7% | 98.0% | -2.3 | A |
| May-18 | 194 | 196 | 99.0% | 98.0% | 1.0 | G |
| Jun-18 | 206 | 217 | 94.9% | 98.0% | -3.1 | A |
| Jul-18 | 198 | 212 | 93.4% | 98.0% | -4.6 | A |
| Aug-18 | 193 | 206 | 93.7% | 98.0% | -4.3 | A |
| Sep-18 | 205 | 208 | 98.6% | 98.0% | 0.6 | G |
| Oct-18 | 216 | 224 | 96.4% | 98.0% | -1.6 | A |
| Nov-18 | | | | 98.0% | | |
| Dec-18 | | | | 98.0% | | |
| Jan-19 | | | | 98.0% | | |
| Feb-19 | | | | 98.0% | | |
| Mar-19 | | | | 98.0% | | |

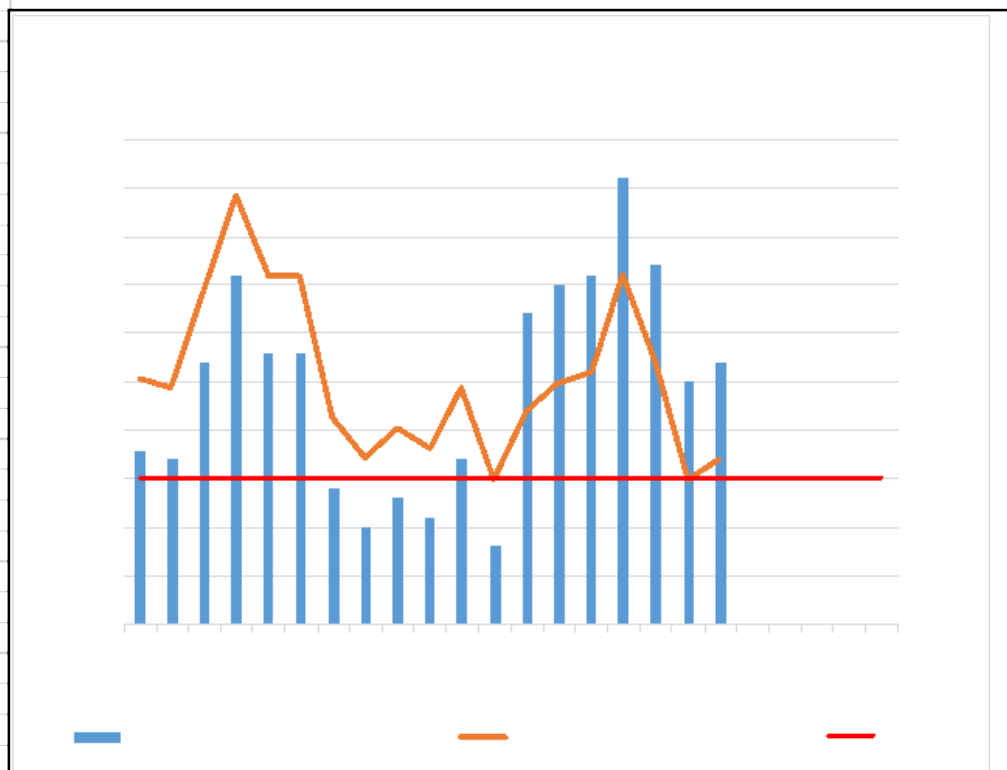
CSC Commentary
 The number of CP visits have dipped slightly with the push to achieve fortnightly visiting to children. We continue to seek and see children at home in a meaningful way and aim to bring this performance back to green.

Definition
 Of all children subject to a child protection plan for more than 4 weeks, the number and percentage of visits that were done within the 4 week deadline.
 This is snapshot data taken at the month end.

| | | |
|-----------------|----------------|-----------------|
| G=98> | A=90-97 | R=<89 |
|-----------------|----------------|-----------------|

Chart 10

Number of Children in Care per 10,000 **Oct-18**



CSC Commentary
 The number of children in care per 10,000 of the population increased by 2 at the end of October. The indicator remains red for the 7th month in a row.

| Month | CiC - | Pop. | Rate of | Target | Variance | RAG |
|--------|-------|-------|---------|--------|----------|-----|
| Apr-17 | 363 | 47715 | 76.1 | 74.0 | 2.8% | A |
| May-17 | 362 | 47715 | 75.9 | 74.0 | 2.5% | A |
| Jun-17 | 372 | 47715 | 78.0 | 74.0 | 5.4% | R |
| Jul-17 | 381 | 47715 | 79.8 | 74.0 | 7.9% | R |
| Aug-17 | 373 | 47715 | 78.2 | 74.0 | 5.6% | R |
| Sep-17 | 373 | 47715 | 78.2 | 74.0 | 5.6% | R |
| Oct-17 | 359 | 47715 | 75.2 | 74.0 | 1.7% | A |
| Nov-17 | 355 | 47715 | 74.4 | 74.0 | 0.5% | A |
| Dec-17 | 358 | 47715 | 75.0 | 74.0 | 1.4% | A |
| Jan-18 | 356 | 47715 | 74.6 | 74.0 | 0.8% | A |
| Feb-18 | 362 | 47715 | 75.9 | 74.0 | 2.5% | A |
| Mar-18 | 353 | 47715 | 74.0 | 74.0 | 0.0% | A |
| Apr-18 | 377 | 50009 | 75.4 | 74.0 | 1.9% | R |
| May-18 | 380 | 50009 | 76.0 | 74.0 | 2.7% | R |
| Jun-18 | 381 | 50009 | 76.2 | 74.0 | 3.0% | R |
| Jul-18 | 391 | 50009 | 78.2 | 74.0 | 5.7% | R |
| Aug-18 | 382 | 50009 | 76.4 | 74.0 | 3.2% | R |
| Sep-18 | 370 | 50009 | 74.0 | 74.0 | 0.0% | R |
| Oct-18 | 372 | 50009 | 74.4 | 74.0 | 0.5% | R |
| Nov-18 | | | | 74.0 | | |
| Dec-18 | | | | 74.0 | | |
| Jan-19 | | | | 74.0 | | |
| Feb-19 | | | | 74.0 | | |
| Mar-19 | | | | 74.0 | | |

Definition
 Number of children in care divided by the population of 0-17 year olds in Peterborough multiplied by 10,000
 The number of children in care is taken as a snapshot count at the end of each month.
 Population for denominator: 50009

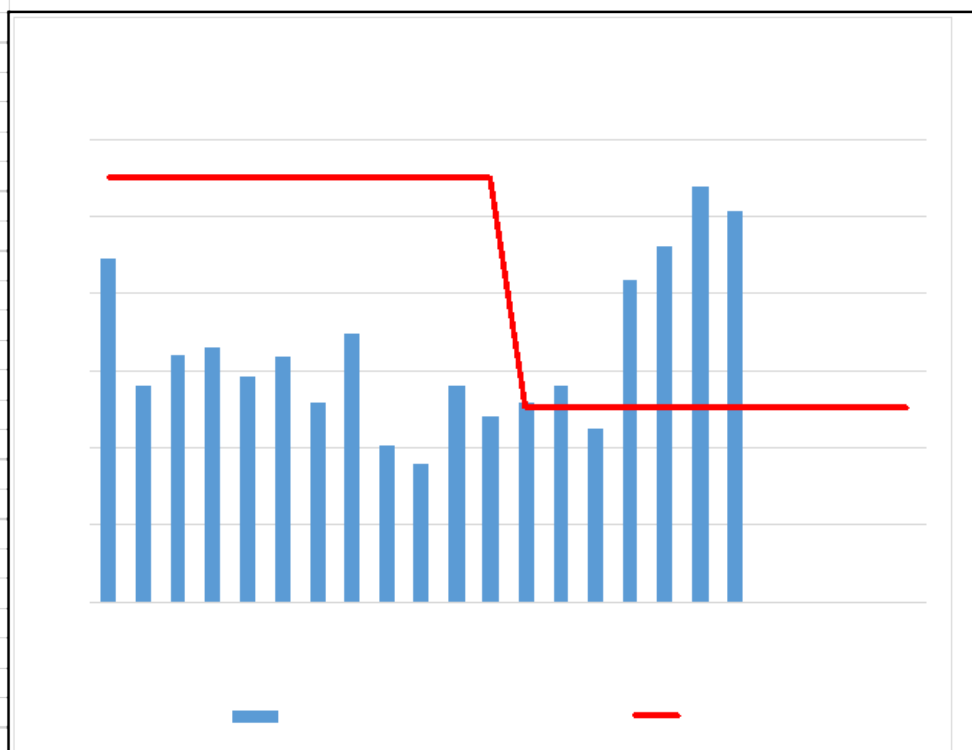
G <=350 **A >351-365** **R >365**

| Year | PCC Result | SN Result | ENG Result |
|---------|------------|-----------|------------|
| 2014-15 | 73 | 79 | 60 |
| 2015-16 | 75 | 80 | 60 |
| 2016-17 | 73 | 82 | 62 |

Chart 11

Placement Stability: 3 or more placements during previous 12 months for CiC

Oct-18



| Month | Num. | Denom. | % of CLA | Target | Variance | RAG |
|--------|------|--------|----------|--------|----------|-----|
| Apr-17 | 27 | 363 | 7.4% | 8.5% | -1.1 | G |
| May-17 | 21 | 362 | 5.8% | 8.5% | -2.7 | G |
| Jun-17 | 23 | 372 | 6.2% | 8.5% | -2.3 | G |
| Jul-17 | 24 | 381 | 6.3% | 8.5% | -2.2 | G |
| Aug-17 | 22 | 373 | 5.9% | 8.5% | -2.6 | G |
| Sep-17 | 23 | 373 | 6.2% | 8.5% | -2.3 | G |
| Oct-17 | 20 | 359 | 5.6% | 8.5% | -2.9 | G |
| Nov-17 | 23 | 355 | 6.5% | 8.5% | -2.0 | G |
| Dec-17 | 18 | 358 | 5.0% | 8.5% | -3.5 | G |
| Jan-18 | 17 | 356 | 4.8% | 8.5% | -3.7 | G |
| Feb-18 | 21 | 362 | 5.8% | 8.5% | -2.7 | G |
| Mar-18 | 19 | 353 | 5.4% | 8.5% | -3.1 | G |
| Apr-18 | 21 | 377 | 5.6% | 5.5% | 0.1 | A |
| May-18 | 22 | 380 | 5.8% | 5.5% | 0.3 | A |
| Jun-18 | 20 | 381 | 5.2% | 5.5% | -0.3 | G |
| Jul-18 | 28 | 391 | 7.2% | 5.5% | 1.7 | A |
| Aug-18 | 29 | 382 | 7.6% | 5.5% | 2.1 | A |
| Sep-18 | 31 | 370 | 8.4% | 5.5% | 2.9 | A |
| Oct-18 | 30 | 372 | 8.1% | 5.5% | 2.6 | A |
| Nov-18 | | | | 5.5% | | |
| Dec-18 | | | | 5.5% | | |
| Jan-19 | | | | 5.5% | | |
| Feb-19 | | | | 5.5% | | |
| Mar-19 | | | | 5.5% | | |

CSC Commentary
 This target has increased in performance by 0.3% on last month. Internal processes to stabilise placements are working when assessing the data over the last 12 months, and when comparing the data with SN and England averages, local performance is good but we will continue to monitor this indicator to ensure that progress continues in the right direction.

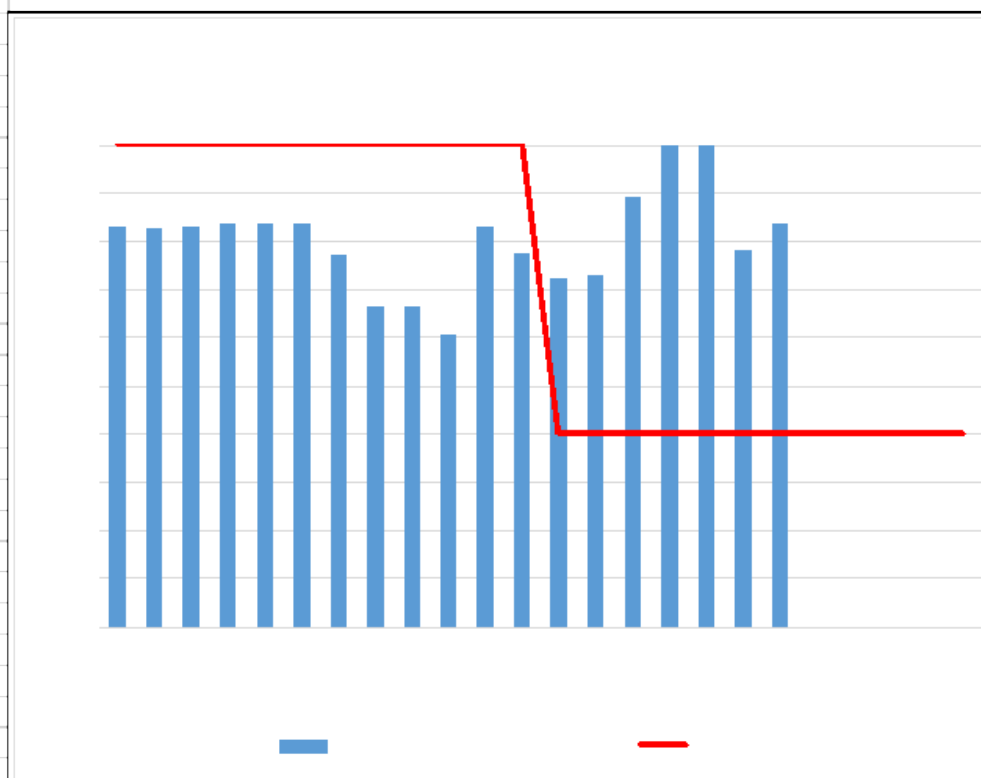
Definition
 The percentage of children in care at any given time with three or more placements during the last 12 months.
 Population for denominator: 46600

| G <= 5.5 | A > 5.6-9 | R > 10 | |
|--------------------|---------------------|------------------|------------|
| Year | PCC Result | SN Result | ENG Result |
| 2013-14 | 9% | 11% | 11% |
| 2014-15 | 6% | 10% | 10% |
| 2015-16 | 9% | 10% | 10% |

Chart 12

Children in Care Reviews held within timescales

Oct-18



| Month | Num. | Denom. | % CiC | Target | Variance | RAG |
|--------|------|--------|--------|--------|----------|-----|
| Apr-17 | 349 | 352 | 99.1% | 100.0% | -0.9 | A |
| May-17 | 343 | 346 | 99.1% | 100.0% | -0.9 | A |
| Jun-17 | 351 | 354 | 99.2% | 100.0% | -0.8 | A |
| Jul-17 | 364 | 367 | 99.2% | 100.0% | -0.8 | A |
| Aug-17 | 368 | 371 | 99.2% | 100.0% | -0.8 | A |
| Sep-17 | 368 | 371 | 99.2% | 100.0% | -0.8 | A |
| Oct-17 | 345 | 349 | 98.9% | 100.0% | -1.1 | A |
| Nov-17 | 351 | 357 | 98.3% | 100.0% | -1.7 | A |
| Dec-17 | 352 | 358 | 98.3% | 100.0% | -1.7 | A |
| Jan-18 | 349 | 356 | 98.0% | 100.0% | -2.0 | A |
| Feb-18 | 353 | 356 | 99.2% | 100.0% | -0.8 | A |
| Mar-18 | 350 | 354 | 98.9% | 100.0% | -1.1 | A |
| Apr-18 | 356 | 361 | 98.6% | 97.0% | 1.6 | G |
| May-18 | 365 | 370 | 98.6% | 97.0% | 1.6 | G |
| Jun-18 | 373 | 375 | 99.5% | 97.0% | 2.5 | G |
| Jul-18 | 370 | 370 | 100.0% | 97.0% | 3.0 | G |
| Aug-18 | 372 | 372 | 100.0% | 97.0% | 3.0 | G |
| Sep-18 | 362 | 366 | 98.9% | 97.0% | 1.9 | G |
| Oct-18 | 363 | 366 | 99.2% | 97.0% | 2.2 | G |
| Nov-18 | | | | 97.0% | | |
| Dec-18 | | | | 97.0% | | |
| Jan-19 | | | | 97.0% | | |
| Feb-19 | | | | 97.0% | | |
| Mar-19 | | | | 97.0% | | |

CSC Commentary

This target is calculated on a rolling year. The change in the overall target has occurred to demonstrate a more realistic approach as inevitably reviews are cancelled due to children being unwell, having other appointments and the needs of carers changing over the year. For the sixth month in a row this indicator is green. Performance has improved by 1.7% on the previous month.

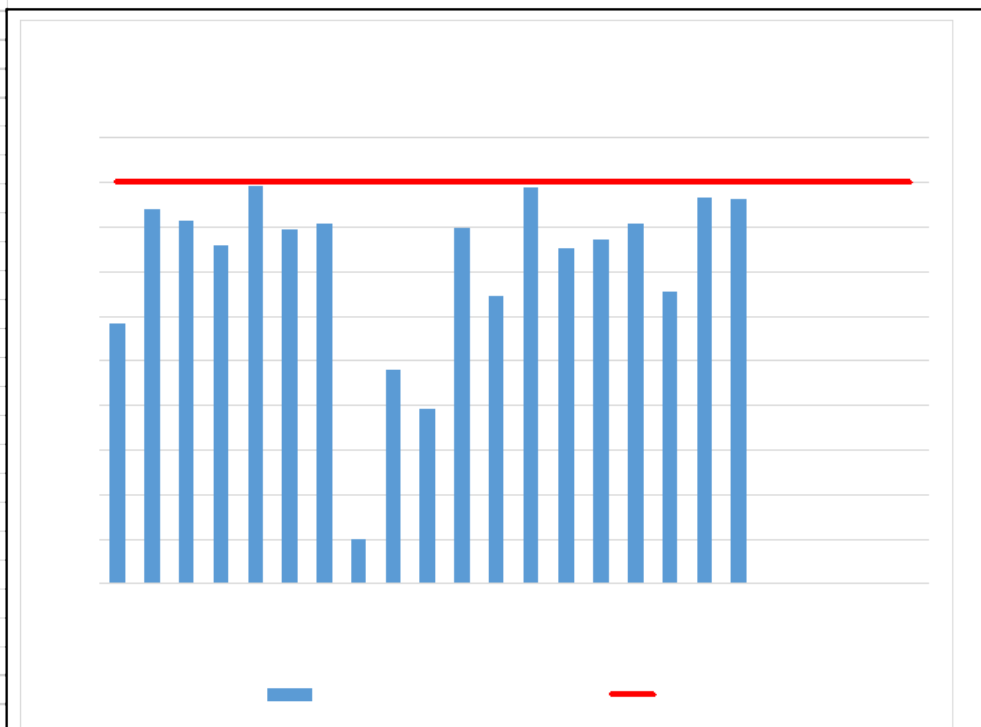
Definition

The percentage of looked after children for at least one month, whose case was reviewed within the required timescales.
The denominator is children who are LAC for at least one month at the end of the reporting month. The numerator is the number of children who have not had a review in the last 12 months recorded as outside of timescale.

| | | |
|--------|----------|-------|
| G >=97 | A= 95-96 | R=<94 |
|--------|----------|-------|

Chart 13

Children in care statutory visits in time **Oct-18**



| Month | Num. | Denom. | % of | Target | Variance | RAG |
|--------|------|--------|-------|--------|----------|-----|
| Apr-17 | 320 | 349 | 91.7% | 98.0% | -6.3 | A |
| May-17 | 334 | 345 | 96.8% | 98.0% | -1.2 | A |
| Jun-17 | 334 | 347 | 96.3% | 98.0% | -1.7 | A |
| Jul-17 | 332 | 349 | 95.1% | 98.0% | -2.9 | A |
| Aug-17 | 357 | 365 | 97.8% | 98.0% | -0.2 | A |
| Sep-17 | 347 | 362 | 95.9% | 98.0% | -2.1 | A |
| Oct-17 | 345 | 359 | 96.1% | 98.0% | -1.9 | A |
| Nov-17 | 282 | 344 | 82.0% | 98.0% | -16.0 | R |
| Dec-17 | 309 | 345 | 89.6% | 98.0% | -8.4 | R |
| Jan-18 | 303 | 345 | 87.8% | 98.0% | -10.2 | R |
| Feb-18 | 331 | 345 | 95.9% | 98.0% | -2.1 | A |
| Mar-18 | 326 | 351 | 92.9% | 98.0% | -5.1 | A |
| Apr-18 | 343 | 351 | 97.7% | 98.0% | -0.3 | A |
| May-18 | 341 | 359 | 95.0% | 98.0% | -3.0 | A |
| Jun-18 | 354 | 371 | 95.4% | 98.0% | -2.6 | A |
| Jul-18 | 348 | 362 | 96.1% | 98.0% | -1.9 | A |
| Aug-18 | 337 | 362 | 93.1% | 98.0% | -4.9 | A |
| Sep-18 | 357 | 367 | 97.3% | 98.0% | -0.7 | A |
| Oct-18 | 352 | 362 | 97.2% | 98.0% | -0.8 | A |
| Nov-18 | | | | 98.0% | | |
| Dec-18 | | | | 98.0% | | |
| Jan-19 | | | | 98.0% | | |
| Feb-19 | | | | 98.0% | | |
| Mar-19 | | | | 98.0% | | |

CSC Commentary
 This target remains in Amber for the 9th month in a row. The impact of analysing the data has maintained improvement albeit within the scope of Amber. This takes account of some young people not wanting to see their SW due to other commitments or forgetting to see their SW. It also relates to SWs not always recording stat visits within timescales.

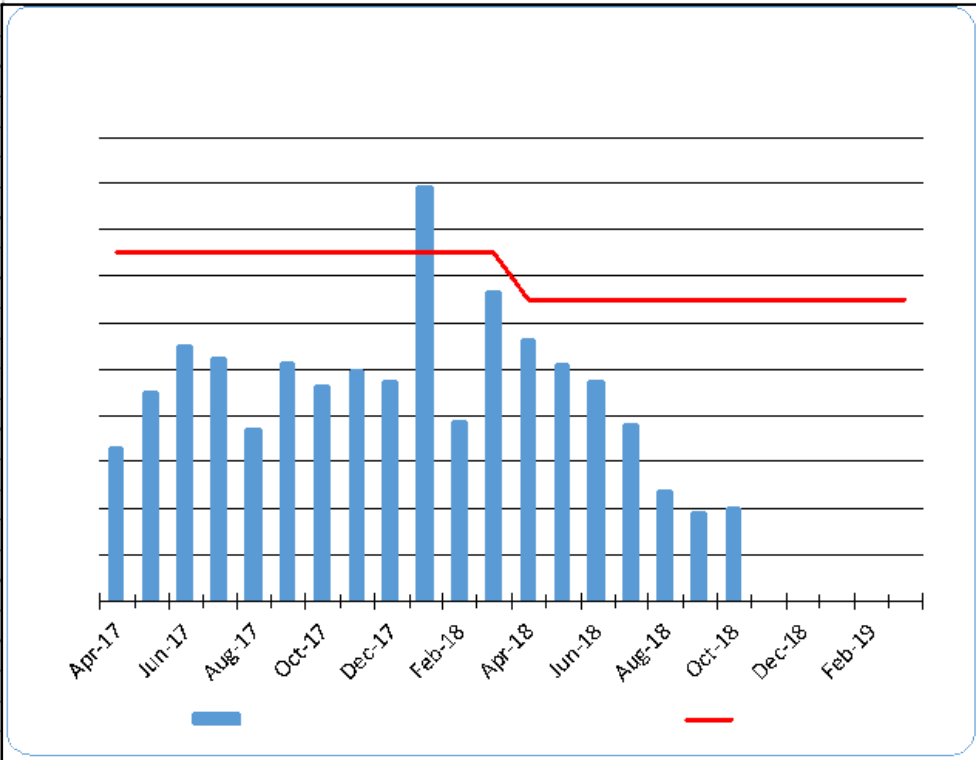
Definition
 Of all Children in Care that have been looked after for more than 6 weeks, the number and percentage of visits that were completed within the 6 week deadline (or within three months for those Children in Care that have been looked after for more than 12 months and whose placement is deemed to be permanent). This is snapshot data taken at the month end.

| | | |
|-------------------|------------------|------------------|
| G >=98% | A 97%-90% | R <90% |
|-------------------|------------------|------------------|

45

Chart 14

Health of Children in Care - Annual Health Assessments **Oct-18**



| Month | Num. | Denom. | % YTD | Target | Variance | RAG |
|--------|------|--------|-------|--------|----------|-----|
| Apr-17 | 225 | 260 | 86.5% | 95.0% | -8.5 | A |
| May-17 | 234 | 263 | 89.0% | 95.0% | -6.0 | A |
| Jun-17 | 242 | 266 | 91.0% | 95.0% | -4.0 | A |
| Jul-17 | 236 | 261 | 90.4% | 95.0% | -4.6 | A |
| Aug-17 | 228 | 261 | 87.4% | 95.0% | -7.6 | A |
| Sep-17 | 239 | 265 | 90.2% | 95.0% | -4.8 | A |
| Oct-17 | 232 | 260 | 89.2% | 95.0% | -5.8 | A |
| Nov-17 | 232 | 258 | 89.9% | 95.0% | -5.1 | A |
| Dec-17 | 228 | 255 | 89.4% | 95.0% | -5.6 | A |
| Jan-18 | 224 | 229 | 97.8% | 95.0% | 2.8 | G |
| Feb-18 | 221 | 252 | 87.7% | 95.0% | -7.3 | A |
| Mar-18 | 237 | 254 | 93.3% | 95.0% | -1.7 | A |
| Apr-18 | 229 | 251 | 91.2% | 93.0% | -1.8 | A |
| May-18 | 229 | 254 | 90.2% | 93.0% | -2.8 | A |
| Jun-18 | 237 | 265 | 89.4% | 93.0% | -3.6 | R |
| Jul-18 | 232 | 265 | 87.5% | 93.0% | -5.5 | R |
| Aug-18 | 221 | 261 | 84.7% | 93.0% | -8.3 | R |
| Sep-18 | 217 | 259 | 83.8% | 93.0% | -9.2 | R |
| Oct-18 | 214 | 255 | 83.9% | 93.0% | -9.1 | R |
| Nov-18 | | | | 93.0% | | |
| Dec-18 | | | | 93.0% | | |
| Jan-19 | | | | 93.0% | | |
| Feb-19 | | | | 93.0% | | |
| Mar-19 | | | | 93.0% | | |

CSC Commentary

This target has dipped again this month. This is being addressed internally and with Health colleagues as previous interface systems were working well.

Definition

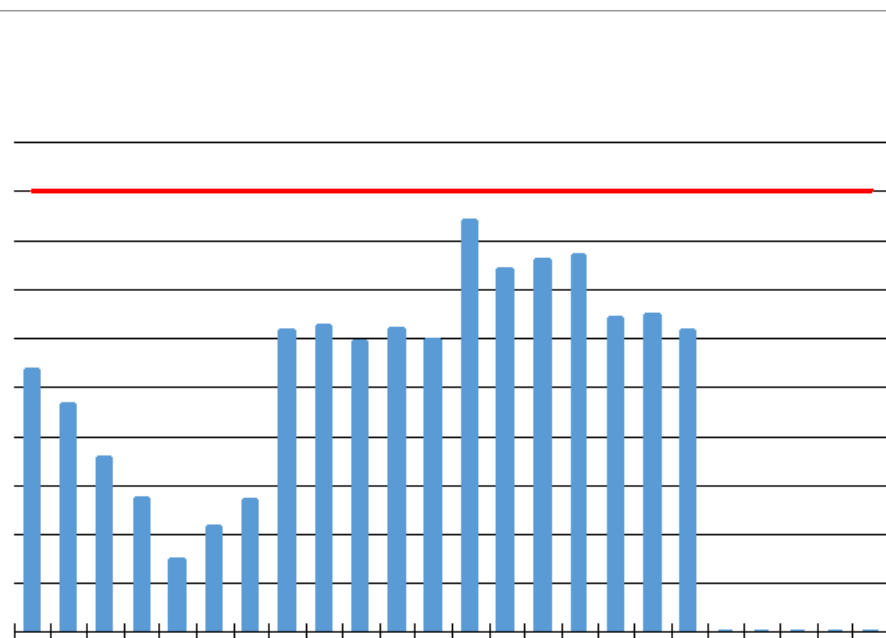
Of the children who had been in care for at least 12 months the proportion who had an annual health assessment during the previous 12 months.

| | | |
|------------------|----------------|-----------------|
| G >=93 | A 90-92 | R <90 |
|------------------|----------------|-----------------|

| Year | PCC Result | SN Result | ENG Result |
|---------|------------|-----------|------------|
| 2014-15 | 88% | 88% | 87% |
| 2015-16 | 96% | 88% | 91% |
| 2016-17 | 95% | 88% | 88% |

Chart 15

Children in care (12 months+) with dental checks within previous 12 months **Oct-18**



| Month | Num. | Denom. | % YTD | Target | Variance | RAG |
|--------|------|--------|-------|--------|----------|-----|
| Apr-17 | 251 | 327 | 76.8% | 95.0% | -18.2 | R |
| May-17 | 238 | 325 | 73.2% | 95.0% | -21.8 | R |
| Jun-17 | 224 | 331 | 67.7% | 95.0% | -27.3 | R |
| Jul-17 | 217 | 341 | 63.6% | 95.0% | -31.4 | R |
| Aug-17 | 198 | 345 | 57.4% | 95.0% | -37.6 | R |
| Sep-17 | 208 | 342 | 60.8% | 95.0% | -34.2 | R |
| Oct-17 | 211 | 332 | 63.6% | 95.0% | -31.4 | R |
| Nov-17 | 266 | 329 | 80.9% | 95.0% | -14.1 | R |
| Dec-17 | 261 | 321 | 81.3% | 95.0% | -13.7 | R |
| Jan-18 | 260 | 327 | 79.5% | 95.0% | -15.5 | R |
| Feb-18 | 264 | 326 | 81.0% | 95.0% | -14.0 | R |
| Mar-18 | 260 | 326 | 79.8% | 95.0% | -15.2 | R |
| Apr-18 | 230 | 250 | 92.0% | 95.0% | -3.0 | A |
| May-18 | 221 | 254 | 87.0% | 95.0% | -8.0 | R |
| Jun-18 | 233 | 265 | 87.9% | 95.0% | -7.1 | R |
| Jul-18 | 234 | 265 | 88.3% | 95.0% | -6.7 | R |
| Aug-18 | 214 | 261 | 82.0% | 95.0% | -13.0 | R |
| Sep-18 | 213 | 259 | 82.2% | 95.0% | -12.8 | R |
| Oct-18 | 206 | 255 | 80.8% | 95.0% | -14.2 | R |
| Nov-18 | | | | 95.0% | | |
| Dec-18 | | | | 95.0% | | |
| Jan-19 | | | | 95.0% | | |
| Feb-19 | | | | 95.0% | | |
| Mar-19 | | | | 95.0% | | |

CSC Commentary

This indicator has been reviewed with performance colleagues. The 903 returns for DFE at the end of March indicated a 96% return. This was for the year ending 17-18. The data for October indicates an decrease in performance by 1.6%

Definition

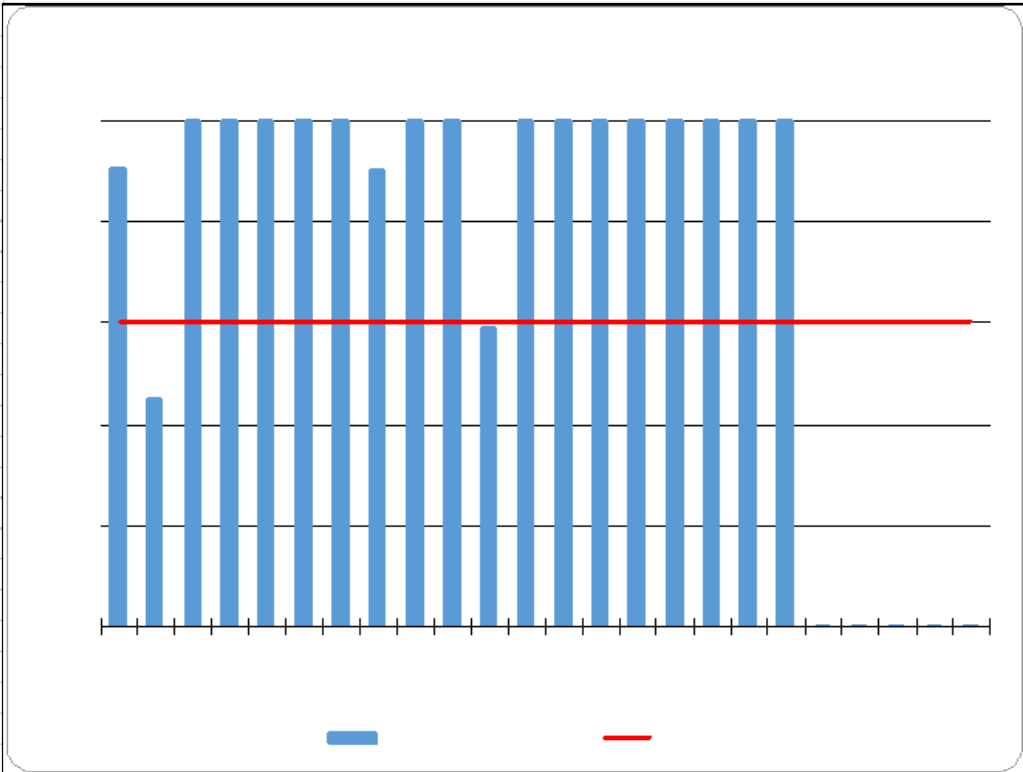
Of the children who have been looked after for 12 months or more and had a dental check within the previous 12 months.

G >= 95% **A > 90%** **R < 90%**

| Year | PCC Result | SN Result | ENG Result |
|---------|------------|-----------|------------|
| 2014-15 | 90% | 77% | 86% |
| 2015-16 | 90% | 81% | 88% |
| 2016-17 | 95% | 82% | 84% |

Chart 16

Personal Education Plans (PEPs) **Oct-18**



| Month | Num. | Denom. | % YTD | Target | Variance | RAG |
|--------|------|--------|--------|--------|----------|-----|
| Apr-17 | 209 | 210 | 99.5% | 98.0% | 1.5 | G |
| May-17 | 212 | 218 | 97.2% | 98.0% | -0.8 | A |
| Jun-17 | 214 | 214 | 100.0% | 98.0% | 2.0 | G |
| Jul-17 | 225 | 225 | 100.0% | 98.0% | 2.0 | G |
| Aug-17 | 208 | 208 | 100.0% | 98.0% | 2.0 | G |
| Sep-17 | 208 | 208 | 100.0% | 98.0% | 2.0 | G |
| Oct-17 | 200 | 200 | 100.0% | 98.0% | 2.0 | G |
| Nov-17 | 203 | 204 | 99.5% | 98.0% | 1.5 | G |
| Dec-17 | 232 | 232 | 100.0% | 98.0% | 2.0 | G |
| Jan-18 | 232 | 232 | 100.0% | 98.0% | 2.0 | G |
| Feb-18 | 238 | 243 | 97.9% | 98.0% | -0.1 | A |
| Mar-18 | 242 | 242 | 100.0% | 98.0% | 2.0 | G |
| Apr-18 | 244 | 244 | 100.0% | 98.0% | 2.0 | G |
| May-18 | 256 | 256 | 100.0% | 98.0% | 2.0 | G |
| Jun-18 | 261 | 261 | 100.0% | 98.0% | 2.0 | G |
| Jul-18 | 263 | 263 | 100.0% | 98.0% | 2.0 | G |
| Aug-18 | 266 | 266 | 100.0% | 98.0% | 2.0 | G |
| Sep-18 | 228 | 228 | 100.0% | 98.0% | 2.0 | G |
| Oct-18 | 227 | 227 | 100.0% | 98.0% | 2.0 | G |
| Nov-18 | | | | 98.0% | | |
| Dec-18 | | | | 98.0% | | |
| Jan-19 | | | | 98.0% | | |
| Feb-19 | | | | 98.0% | | |
| Mar-19 | | | | 98.0% | | |

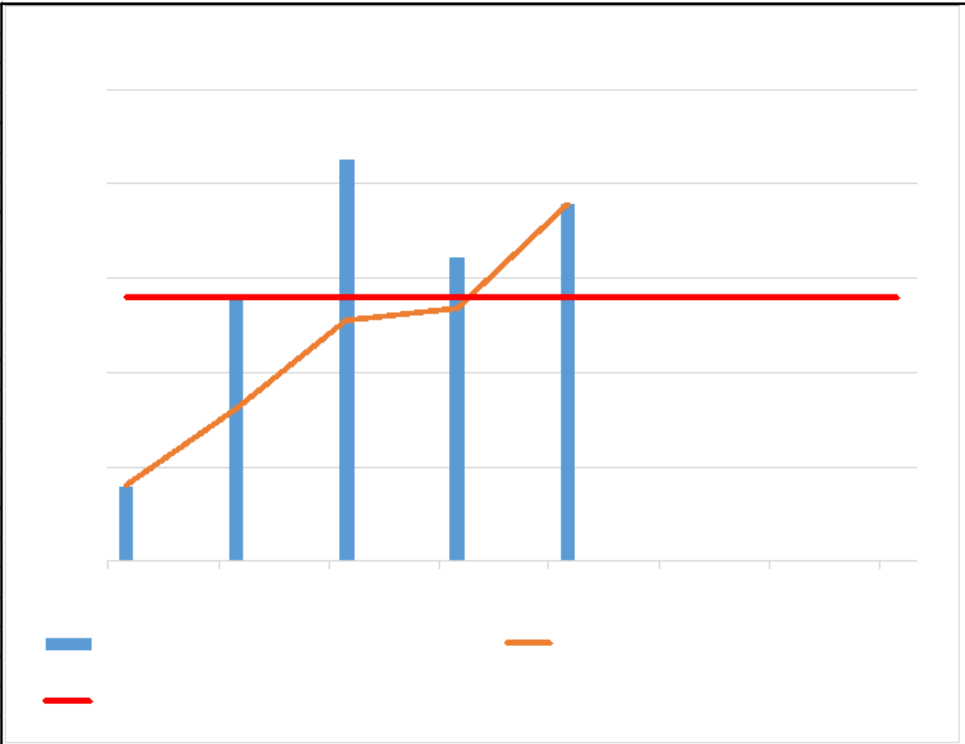
CSC Commentary
 The continued 100% completion of PEPs reflects the ongoing partnership between PVS and social workers.

Definition
 The denominator is the number of children in care who are of school age. The numerator is of those children, the number that have a PEP added to the system. This has been addressed with managers.

G = >98% **A=95%-97%** **R < 95%**

Chart 17

Percentage of children adopted **Oct-18**



| Month | Adop. | CiC Ends | % of CiC | % YTD | Target | Var | RAG |
|--------|-------|----------|----------|-------|--------|-------|-----|
| Apr-17 | | | | | | | |
| May-17 | | | | | | | |
| Jun-17 | 2 | 51 | 3.9% | 3.9% | 14.0% | -10.1 | R |
| Jul-17 | | | | | | | |
| Aug-17 | | | | | | | |
| Sep-17 | 5 | 36 | 13.9% | 8.0% | 14.0% | -6.0 | R |
| Oct-17 | | | | | | | |
| Nov-17 | | | | | | | |
| Dec-17 | 10 | 47 | 21.3% | 12.7% | 14.0% | -1.3 | A |
| Jan-18 | | | | | | | |
| Feb-18 | | | | | | | |
| Mar-18 | 5 | 31 | 16.1% | 13.3% | 14.0% | -0.7 | A |
| Apr-18 | | | | | | | |
| May-18 | | | | | | | |
| Jun-18 | 7 | 37 | 18.9% | 18.9% | 20.0% | | G |
| Jul-18 | | | | | | | |
| Aug-18 | | | | | | | |
| Sep-18 | 1 | 49 | 2.0% | 9.3% | 20.0% | | R |
| Oct-18 | | | | | | | |
| Nov-18 | | | | | | | |
| Dec-18 | | | | | 20.0% | | |
| Jan-19 | | | | | | | |
| Feb-19 | | | | | | | |
| Mar-19 | | | | | 20.0% | | |

CSC Commentary
Data reported quarterly

| | | | | | | | |
|-------------|---|----|----|------|-------|-------|---|
| YTD: | 8 | 86 | -- | 9.3% | 20.0% | -10.7 | A |
|-------------|---|----|----|------|-------|-------|---|

Definition
The number of children adopted as a percentage of the number of children who ceased to be in care

| | | |
|------------------|---------------|----------------|
| G >=13 | A 8-12 | R <7 |
|------------------|---------------|----------------|

| Year | PCC Result | SN Result | ENG Result |
|---------|------------|-----------|------------|
| 2014-15 | 19.0% | 24.0% | 17.0% |
| 2015-16 | 17.0% | 21.0% | 15.0% |
| 2016-17 | 13.0% | 22.5% | 14.0% |

This page is intentionally left blank